

## KEYNOTE-590: KEYTRUDA® (pembrolizumab) plus chemotherapy for the first-line treatment of locally advanced unresectable or metastatic carcinoma of the oesophagus in adults whose tumours express PD-L1 with a CPS $\geq 10$

These slides are provided to UK healthcare professionals as a data resource for personal education. To ensure compliance with all relevant codes and regulations, these slides must not be amended and should only be downloaded with the latest prescribing information. Prescribing information and further safety information can be found at the footer of this slide.

Please refer to the full KEYTRUDA Summary of Product Characteristics and Risk Minimisation Materials for patients before prescribing KEYTRUDA.

Adverse events should be reported. Reporting forms and information can be found at <https://yellowcard.mhra.gov.uk/> or search for MHRA Yellow Card in the Google Play or Apple App Store. Adverse events should also be reported to Merck Sharp & Dohme (UK) Limited (Tel: 020 8154 8000).  
(please note that the MHRA Yellow Card link will redirect you to an external website, for which MSD does not review or control the content)



CPS, combined positive score; MHRA, Medicines and Healthcare products Regulatory Agency; PD-L1, programmed death ligand-1.



Merck Sharp & Dohme (UK) Limited  
Registered Office: 120 Moorgate, London  
EC2M 6UR, United Kingdom  
Registered in England No. 233687

**Intended for UK Healthcare Professionals only.**  
**For the KEYTRUDA Prescribing Information, please click the following [link](#) or the PI button located on each slide.**



## KEYTRUDA® (pembrolizumab) licensed indications

- KEYTRUDA, in combination with platinum- and fluoropyrimidine-based chemotherapy, is indicated for the first-line treatment of locally advanced unresectable or metastatic carcinoma of the oesophagus in adults whose tumours express PD-L1 with a CPS  $\geq 10$



## NICE technology appraisal guidance [TA737] remains in place

- Pembrolizumab with platinum- and fluoropyrimidine-based chemotherapy is recommended, within its marketing authorisation, as an option for untreated locally advanced unresectable or metastatic carcinoma of the oesophagus or HER2-negative GOJ adenocarcinoma in adults whose tumours express PD-L1 with a CPS  $\geq 10$



## Slide deck navigation



Click the links below to navigate to the section of interest

**Pembrolizumab  
and chemotherapy  
overview**

**KEYNOTE-590  
overview**

**KEYNOTE-590  
results**

**Appendix**

- To access the navigation page, click the 'Home' icon
- To access the Appendix page, click the 'Book' icon
- The links in this slide will redirect you to third-party websites where indicated.  
Please note that:
  - MSD does not review or control the content of any third-party website
  - MSD does not endorse and is not responsible for the accuracy, content, practices or standards of any third-party sources



# Pembrolizumab and chemotherapy overview

**The  
pembrolizumab  
plus chemotherapy  
licence**

**Current treatment  
landscape/  
patient pathway**





# The pembrolizumab plus chemotherapy licence<sup>1,2</sup>



## KEYTRUDA™



Platinum-based  
chemotherapy

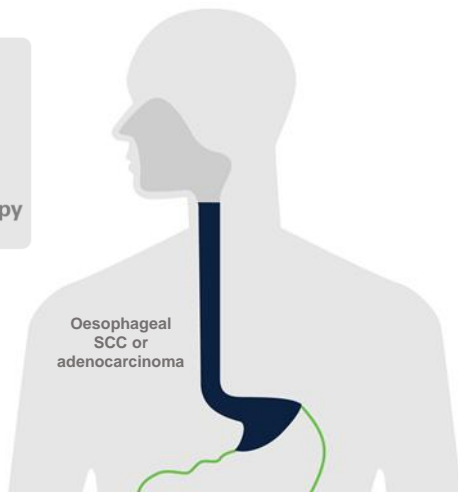
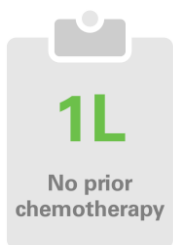
Fluoropyrimidine-based  
chemotherapy



### Timing and dosing of KEYTRUDA



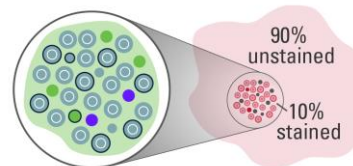
200 mg Q3W or 400 mg Q6W  
administered as an IV infusion  
over 30 minutes



Oesophageal  
SCC or  
adenocarcinoma

Pembrolizumab in combination with platinum and fluoropyrimidine-based chemotherapy is indicated for the first-line treatment of locally advanced unresectable or metastatic carcinoma of the oesophagus in adults whose tumours express PD-L1 with a CPS  $\geq 10$

CPS scoring captures PD-L1 expression on both  
tumour and tumour-infiltrating cells



- Tumour cell
- Tumour-associated immune cells
- PD-L1-expressing cells

$$\text{CPS} = \frac{\text{Number of PD-L1 positive cells (tumour cells, lymphocytes and macrophages)}}{\text{Total number of viable tumour cells}} \times 100$$



Among the 749 patients in KEYNOTE-590, 383 (51%) had tumours that expressed PD-L1 with a CPS  $\geq 10$  based on the PD-L1 IHC 22C3 pharmDx™ kit<sup>2</sup>

For more information on the mode of action of pembrolizumab, [click here](#). By clicking on this link you will be taken to an MSD promotional website

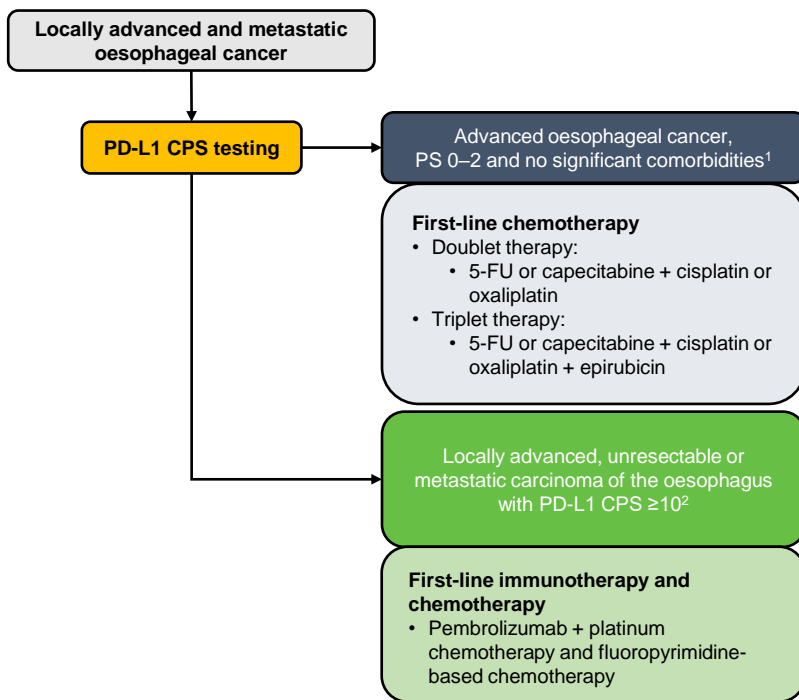
1L, first-line; CPS, combined positive score; HER2, human epidermal growth factor receptor 2; PD-L1, programmed death ligand-1; SCC, squamous cell carcinoma.

1. PD-L1 IHC 22C3 pharmDx interpretation manual – Esophageal Agilent Dako. Available at: <https://www.agilent.com/cs/library/usermanuals/public/29439-d67239-pd-l1-ihc22c3-ec-kn590-int-man-en.pdf> Accessed February 2024; 2. KEYTRUDA (pembrolizumab) Summary of Product Characteristics. Available at: <https://www.medicines.org.uk/emc/product/2498>. Accessed February 2024.





# Current treatment landscape in first-line locally advanced or metastatic oesophageal cancer<sup>1,2</sup>



Pembrolizumab in combination with platinum and fluoropyrimidine based chemotherapy, is indicated for the first-line treatment of locally advanced unresectable or metastatic carcinoma of the oesophagus in adults whose tumours express PD-L1 with a CPS  $\geq 10$ <sup>2</sup>

Figure adapted from NICE Palliative management for people with oesophageal and gastric cancer.

5-FU, 5-fluorouracil; CPS, combined positive score; NICE, National Institute for Health and Care Excellence; PD-L1, programmed death ligand-1; PS, performance status.

1. Oesophago-gastric cancer: assessment and management in adults. NICE. Available at: <https://www.nice.org.uk/guidance/ng83/chapter/Recommendations>. Accessed February 2024; 2. KEYTRUDA (pembrolizumab) Summary of Product Characteristics. Available at: <https://www.medicines.org.uk/emc/product/2498>. Accessed February 2024.



# KEYNOTE-590 overview

**Study design**

**Baseline  
characteristics**

**Definition of  
analyses**







# KEYNOTE-590: Study design

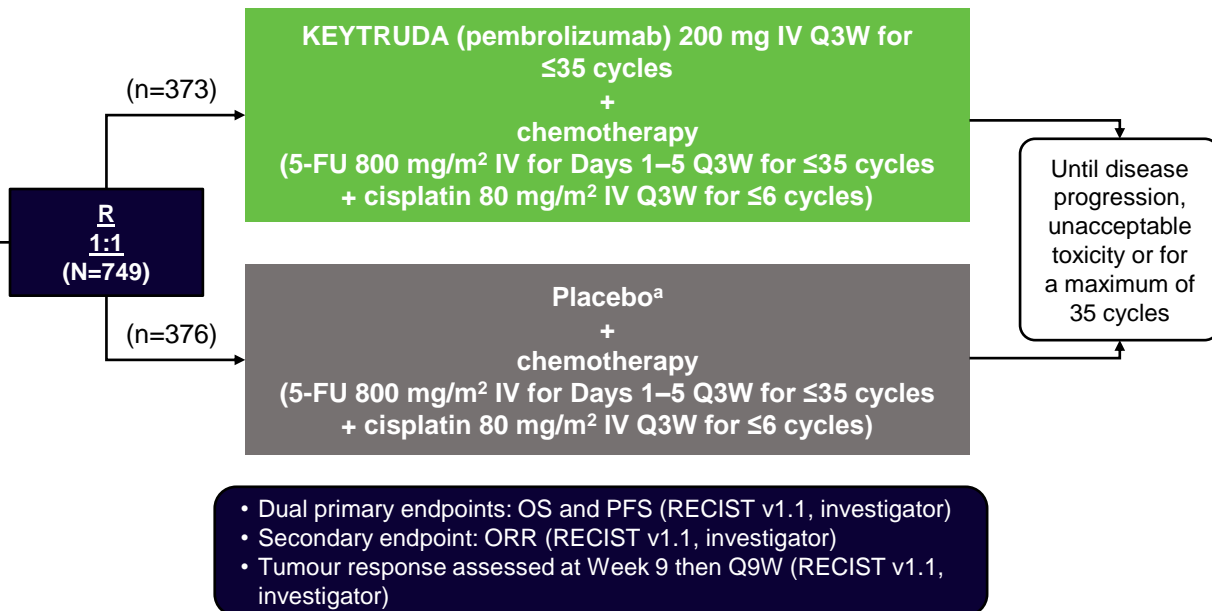
## Randomised, double-blind, placebo-controlled Phase 3 study

### Key eligibility criteria

- Locally advanced unresectable or metastatic EAC or ESCC or advanced/metastatic GOJ Siewert type 1 adenocarcinoma
- Treatment naive
- ECOG PS 0 or 1
- Measurable disease (RECIST v1.1)

### Stratification factors

- Asia vs non-Asia regions
- ESCC vs EAC
- ECOG PS 0 vs 1



Analysis cut-off date: 2 July 2020. Median follow-up 22.6 months.

Figure adapted from Kato K ESMO 2020.

<sup>a</sup>Normal saline administered by IV infusion Q3W for ≤35 cycles.

5-FU, 5-fluorouracil; EAC, oesophageal adenocarcinoma; ECOG PS, Eastern Cooperative Oncology Group performance status; ESCC, oesophageal squamous-cell carcinoma; GOJ, gastro-oesophageal junction; IV, intravenous; ORR, objective response rate; OS, overall survival; PFS, progression-free survival; Q3W, every 3 weeks; Q9W, every 9 weeks; R, randomisation; RECIST v1.1, Response Evaluation Criteria in Solid Tumors Version 1.1.

Sun JM et al. *Lancet* 2021;398:759–771.





## KEYNOTE-590: Baseline characteristics in the ITT population



Characteristic, n (%) <sup>a</sup>	KEYTRUDA (pembrolizumab) + cisplatin + 5-FU (n=373)	Placebo + cisplatin + 5-FU (n=376)
Median age (range), years	64.0 (28–94)	62.0 (27–89)
≥65 years of age	172 (46)	150 (40)
Male sex	306 (82)	319 (85)
Asia region	196 (53)	197 (52)
ECOG PS 1	223 (60)	225 (60)
Metastatic disease	344 (92)	339 (90)
Unresectable/locally advanced	29 (8)	37 (10)
Squamous cell carcinoma	274 (73)	274 (73)
Adenocarcinoma	99 (27)	102 (27)
Oesophageal	58 (16)	52 (14)
GOJ	41 (11)	50 (13)
PD-L1 CPS ≥10	186 (50)	197 (52)
Oesophageal squamous cell carcinoma	143 (38)	143 (38)
Adenocarcinoma	43 (12)	54 (14)

These data comprise the full ITT population. Please note that the licensed indication for pembrolizumab is in locally advanced, unresectable or metastatic carcinoma of the oesophagus in adults whose tumours express **PD-L1 with a CPS ≥10**

Analysis cut-off date: 2 July 2020. Median follow-up 22.6 months.

Table adapted from Kato K ESMO 2020.

<sup>a</sup>Unless stated otherwise.

ECOG PS, Eastern Cooperative Oncology Group performance status; GOJ, gastro-oesophageal junction; HER2, human epidermal growth factor receptor 2; ITT, intention to treat; PD-L1, programmed death ligand-1.

Sun JM et al. *Lancet* 2021;398:759–771.





## KEYNOTE-590 definition of analyses<sup>1,2</sup>



Analysis	Cut-off date	Slide symbol	Median follow-up
First interim <sup>1</sup>	2 July 2020	I	22.6 months
12-month follow-up <sup>2</sup>	9 July 2021	II	34.8 months



# KEYNOTE-590 results

**OS in PD-L1 CPS  $\geq 10$  population  
(first interim analysis)**

**OS in PD-L1 CPS  $\geq 10$  population  
(12-month follow-up analysis)**

**PFS in PD-L1 CPS  $\geq 10$  population (first interim analysis)**

**PFS in PD-L1 CPS  $\geq 10$  population (12-month follow-up analysis)**

**Summary of AEs in all treated patients (first interim analysis)**

**Summary of AEs in all treated patients (12-month follow-up analysis)**

**Selected AEs with >15% incidence in each arm (first interim analysis)**

**Selected AEs with >15% incidence in each arm (12-month follow-up interim analysis)**

**Selected AEs of special interest (first interim analysis)**

**Pembrolizumab dosing**

**KEYNOTE-590: Summary**

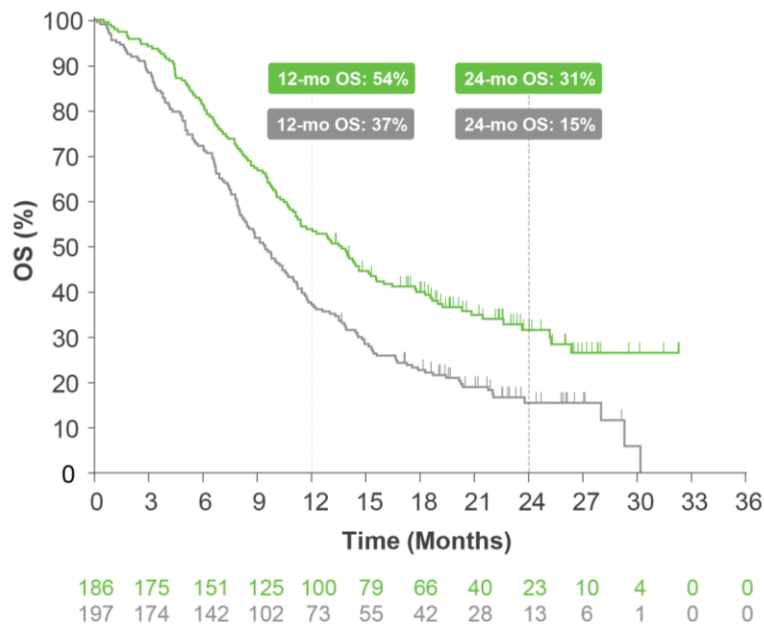




# KEYNOTE-590: OS in the PD-L1 CPS $\geq 10$ population (first interim analysis)<sup>1,2</sup>



Treatment arm	Events (%)	Median (95% CI), months	HR (95% CI)	p value
KEYTRUDA (pembrolizumab) + cisplatin + 5-FU	67	13.5 (11.1–15.6)	0.62 (0.49–0.78)	<0.0001
Placebo + cisplatin + 5-FU	84	9.4 (8.0–10.7)	—	—



KEYTRUDA (pembrolizumab) plus cisplatin plus 5-FU versus placebo plus cisplatin plus 5-FU was superior for OS in patients with PD-L1 CPS  $\geq 10$

- 38% reduction in the risk of death with KEYTRUDA (pembrolizumab) plus cisplatin plus 5-FU (n=186) versus placebo plus cisplatin plus 5-FU (n=197) (HR=0.62; 95% CI: 0.49–0.78, p<0.0001)
- Median OS with KEYTRUDA (pembrolizumab) plus cisplatin plus 5-FU was 13.5 months (95% CI: 11.1–15.6) versus 9.4 months (95% CI: 8.0–10.7) with placebo plus cisplatin plus 5-FU

The OS forest plot for the key subgroups within the KEYNOTE-590 study is in the appendix. [Click here to view.](#)

Analysis cut-off date: 2 July 2020. Median follow-up 22.6 months.

Figure adapted from Kato K ESMO 2020.

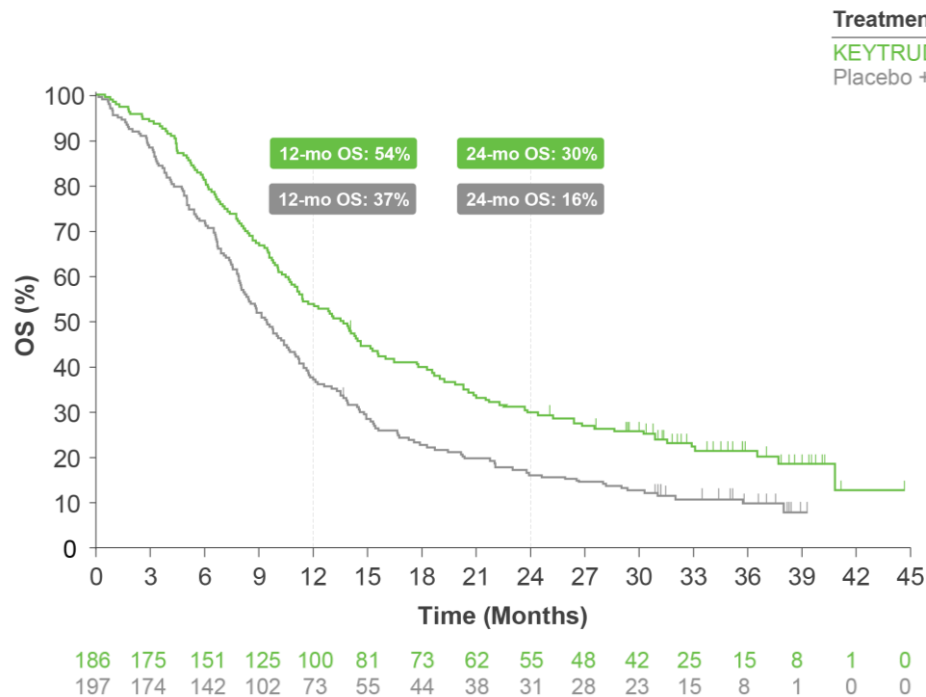
5-FU, 5-fluorouracil; CI, confidence interval; CPS, combined positive score; HR, hazard ratio; OS, overall survival; PD-L1, programmed death ligand-1.

1. Kato K et al. Presented at the European Society of Medical Oncology (ESMO) Virtual Congress 2020, 19–21 September 2020; 2. Sun JM et al. *Lancet* 2021;398:759–771.





# KEYNOTE-590: OS in the PD-L1 CPS $\geq 10$ population (12-month follow-up analysis)



Treatment arm	Events (%)	Median (95% CI), months	HR (95% CI)
KEYTRUDA (pembrolizumab) + cisplatin + 5-FU	80	13.6 (11.1–15.2)	0.64 (0.51–0.80)
Placebo + cisplatin + 5-FU	90	9.4 (8.0–10.7)	—

**KEYTRUDA (pembrolizumab) plus cisplatin plus 5-FU versus placebo plus cisplatin plus 5-FU was superior for OS in patients with PD-L1 CPS  $\geq 10$**

- 36% reduction in the risk of death with KEYTRUDA (pembrolizumab) plus cisplatin plus 5-FU (n=186) versus placebo plus cisplatin plus 5-FU (n=197) (HR=0.64; 95% CI: 0.51–0.80)
- Median OS with KEYTRUDA (pembrolizumab) plus cisplatin plus 5-FU was 13.6 months (95% CI: 11.1–15.2) versus 9.4 months (95% CI: 8.0–10.7) with placebo plus cisplatin plus 5-FU

**No statistical conclusions can be drawn from this analysis.**  
The OS forest plot for the key subgroups within the KEYNOTE-590 study is in the appendix. [Click here to view.](#)

Analysis cut-off date: 9 July 2021. Median follow-up 34.8 months.

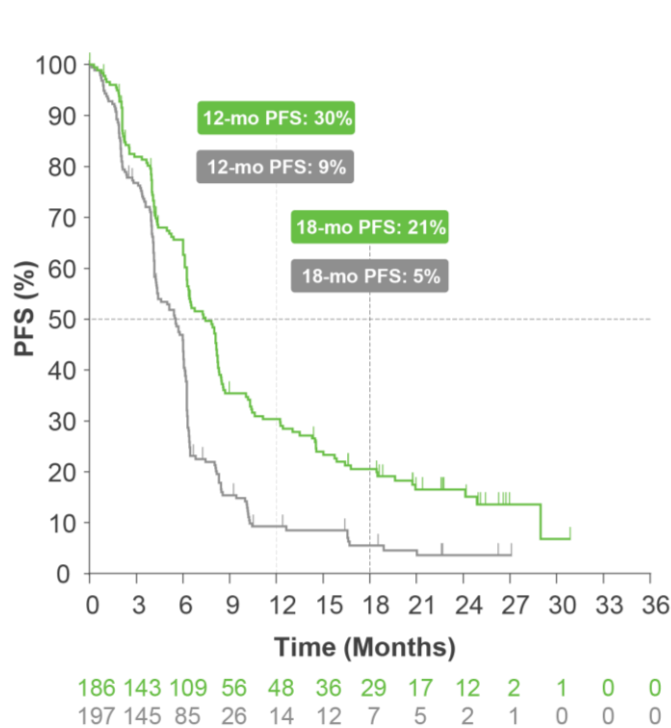
Figure adapted from Metges JP ASCO-GI 2022.

5-FU, 5-fluorouracil; CI, confidence interval; CPS, combined positive score; HR, hazard ratio; OS, overall survival; PD-L1, programmed death ligand-1. Metges JP et al. Presented at the American Society of Clinical Oncology Gastrointestinal Cancers (ASCO-GI) Symposium 2022, 20–22 January 2022.





# KEYNOTE-590: PFS in the PD-L1 CPS $\geq 10$ population (first interim analysis)<sup>1,2</sup>



Treatment arm	Events (%)	Median (95% CI), months	HR (95% CI)	p value
KEYTRUDA (pembrolizumab) + cisplatin + 5-FU	75	7.5 (6.2–8.2)	0.51 (0.41–0.65)	<0.0001
Placebo + cisplatin + 5-FU	88	5.5 (4.3–6.0)	—	—

KEYTRUDA (pembrolizumab) plus cisplatin plus 5-FU versus placebo plus cisplatin plus 5-FU was superior for PFS in patients with PD-L1 CPS  $\geq 10$

- 49% reduction in the risk of disease progression or death with KEYTRUDA (pembrolizumab) plus cisplatin plus 5-FU (n=186) versus placebo plus cisplatin plus 5-FU (n=197) (HR=0.51; 95% CI: 0.41–0.65; p<0.0001)
- Median PFS with KEYTRUDA (pembrolizumab) plus cisplatin plus 5-FU was 7.5 months (95% CI: 6.2–8.2) versus 5.5 months (95% CI: 4.3–6.0) with placebo plus cisplatin plus 5-FU

The PFS forest plot for the key subgroups within the KEYNOTE-590 study is in the appendix. [Click here to view.](#)

Analysis cut-off date: 2 July 2020. Median follow-up 22.6 months.

Figure adapted from Kato K ESMO 2020.

5-FU, 5-fluorouracil; CI, confidence interval; CPS, combined positive score; HR, hazard ratio; OS, overall survival; PD-L1, programmed death ligand-1; PFS, progression-free survival.

1. Kato K et al. Presented at the European Society of Medical Oncology (ESMO) Virtual Congress 2020, 19–21 September 2020; 2. Sun JM et al. *Lancet* 2021;398:759–771.

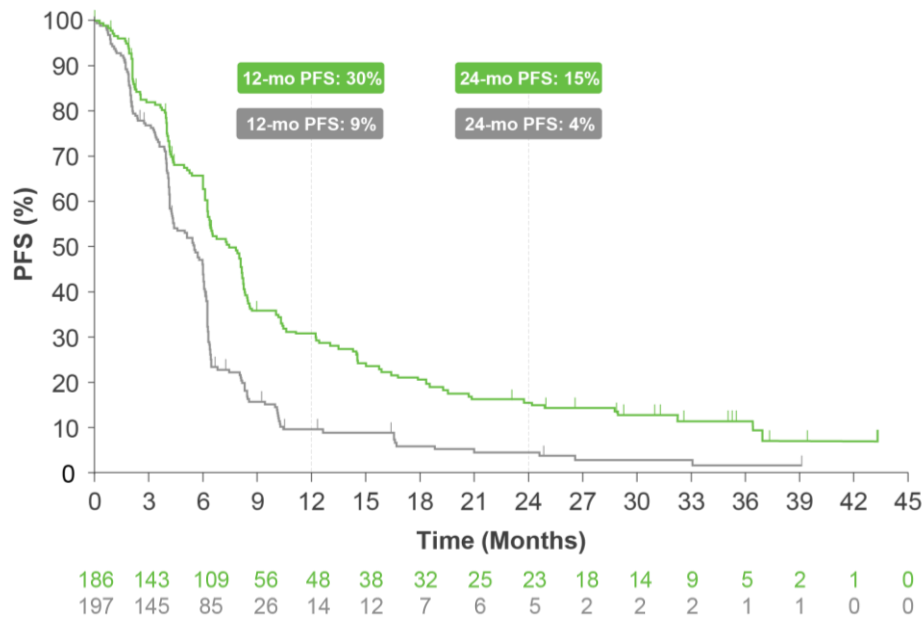




# KEYNOTE-590: PFS in the PD-L1 CPS $\geq 10$ population (12-month follow-up analysis)



Treatment arm	Events (%)	Median (95% CI), months	HR (95% CI)
KEYTRUDA (pembrolizumab) + cisplatin + 5-FU	80	7.5 (6.2–8.2)	0.51 (0.41–0.65)
Placebo + cisplatin + 5-FU	90	5.5 (4.3–6.0)	



KEYTRUDA (pembrolizumab) plus cisplatin plus 5-FU versus placebo plus cisplatin plus 5-FU was superior for PFS in patients with PD-L1 CPS  $\geq 10$

- 49% reduction in the risk of disease progression or death with KEYTRUDA (pembrolizumab) plus cisplatin plus 5-FU (n=186) versus placebo plus cisplatin plus 5-FU (n=197) (HR=0.51; 95% CI: 0.41–0.65)
- Median PFS with KEYTRUDA (pembrolizumab) plus cisplatin plus 5-FU was 7.5 months (95% CI: 6.2–8.2) versus 5.5 months (95% CI: 4.3–6.0) with placebo plus cisplatin plus 5-FU

No statistical conclusions can be drawn from this analysis.  
The PFS forest plot for the key subgroups within the KEYNOTE-590 study is in the appendix. [Click here to view.](#)

Analysis cut-off date: 9 July 2021. Median follow-up 34.8 months.

Figure adapted from Metges JP ASCO-GI 2022.

5-FU, 5-fluorouracil; CI, confidence interval; CPS, combined positive score; HR, hazard ratio; PD-L1, programmed death ligand-1; PFS, progression-free survival.

Metges JP et al. Presented at the American Society of Clinical Oncology Gastrointestinal Cancers (ASCO-GI) Symposium 2022, 20–22 January 2022.







## KEYNOTE-590: Summary of AEs in all treated patients (first interim analysis)<sup>1,2</sup>



AEs, n (%) <sup>a</sup>	KEYTRUDA (pembrolizumab) + cisplatin + 5-FU (n=370)	Placebo + cisplatin + 5-FU (n=370)
Any	370 (100)	368 (99.5)
Treatment-related	364 (98.4)	360 (97.3)
Grade ≥3	266 (71.9)	250 (67.6)
Led to discontinuation	72 (19.5)	43 (11.6)
Led to death	9 (2.4)	5 (1.4)
Immune-mediated AEs and infusion reactions	95 (25.7)	43 (11.6)
Grade ≥3	26 (7.0)	8 (2.2)

These data comprise the full ITT population. Please note that the licensed indication for pembrolizumab is in locally advanced, unresectable or metastatic carcinoma of the oesophagus in adults whose tumours express **PD-L1 with a CPS ≥10**

[Click here](#) to access the immune-mediated AE slide deck for adverse event management of pembrolizumab + chemotherapy combinations. Further information on the safety of pembrolizumab plus chemotherapy combinations can be found in the SmPC [here](#).

Analysis cut-off date: 2 July 2020. Median follow-up 22.6 months.

Table adapted from Kato K ESMO 2020.

<sup>a</sup>Unless stated otherwise.

AE, adverse event; CPS, combined positive score; HER2, human epidermal growth factor receptor 2; PD-L1, programmed death ligand-1.

1. Kato K et al. Presented at the European Society of Medical Oncology (ESMO) Virtual Congress 2020, 19–21 September 2020; 2. Sun JM et al. *Lancet* 2021;398:759–771.

PI





# KEYNOTE-590: Summary of AEs in all treated patients (12-month follow-up analysis)



AEs, n (%)	KEYTRUDA (pembrolizumab) + cisplatin + 5-FU (n=373)	Placebo + cisplatin + 5-FU (n=376)
Any	373 (100)	374 (99.5)
Treatment-related	367 (98.4)	366 (97.3)
Grade ≥3	268 (71.9)	255 (67.6)
Led to discontinuation	79 (21.1)	47 (12.4)
Led to death	9 (2.4)	5 (1.4)
Immune-mediated AEs and infusion reactions	100 (26.8)	52 (13.8)
Grade ≥3	26 (7.0)	8 (2.2)

These data comprise the full ITT population. Please note that the licensed indication for pembrolizumab is in locally advanced, unresectable or metastatic carcinoma of the oesophagus in adults whose tumours express **PD-L1 with a CPS ≥10**.

[Click here](#) to access the immune-mediated AE slide deck for adverse event management of pembrolizumab + chemotherapy combinations. Further information on the safety of pembrolizumab plus chemotherapy combinations can be found in the SmPC [here](#).

Analysis cut-off date: 9 July 2021. Median follow-up 34.8 months.

Table adapted from Metges JP ASCO-GI 2022.

AE, adverse event; CPS, combined positive score; HER2, human epidermal growth factor receptor 2; PD-L1, programmed death ligand-1.

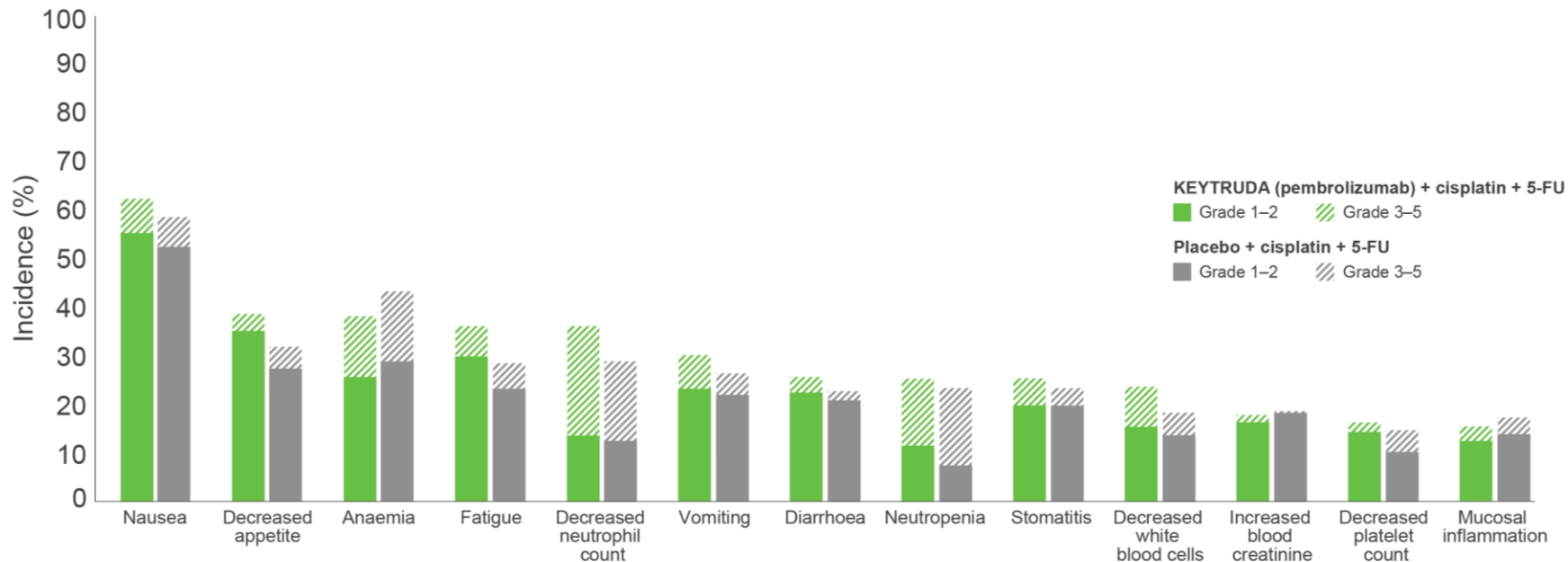
Metges JP et al. Presented at the American Society of Clinical Oncology Gastrointestinal Cancers (ASCO-GI) Symposium 2022, 20–22 January 2022.

PI





## KEYNOTE-590: Selected AEs with >15% incidence in either arm (first interim analysis)<sup>1,2</sup>



[Click here](#) to access the immune-mediated AE slide deck for adverse event management of pembrolizumab + chemotherapy combinations. Further information on the safety of pembrolizumab plus chemotherapy combinations can be found in the SmPC [here](#).

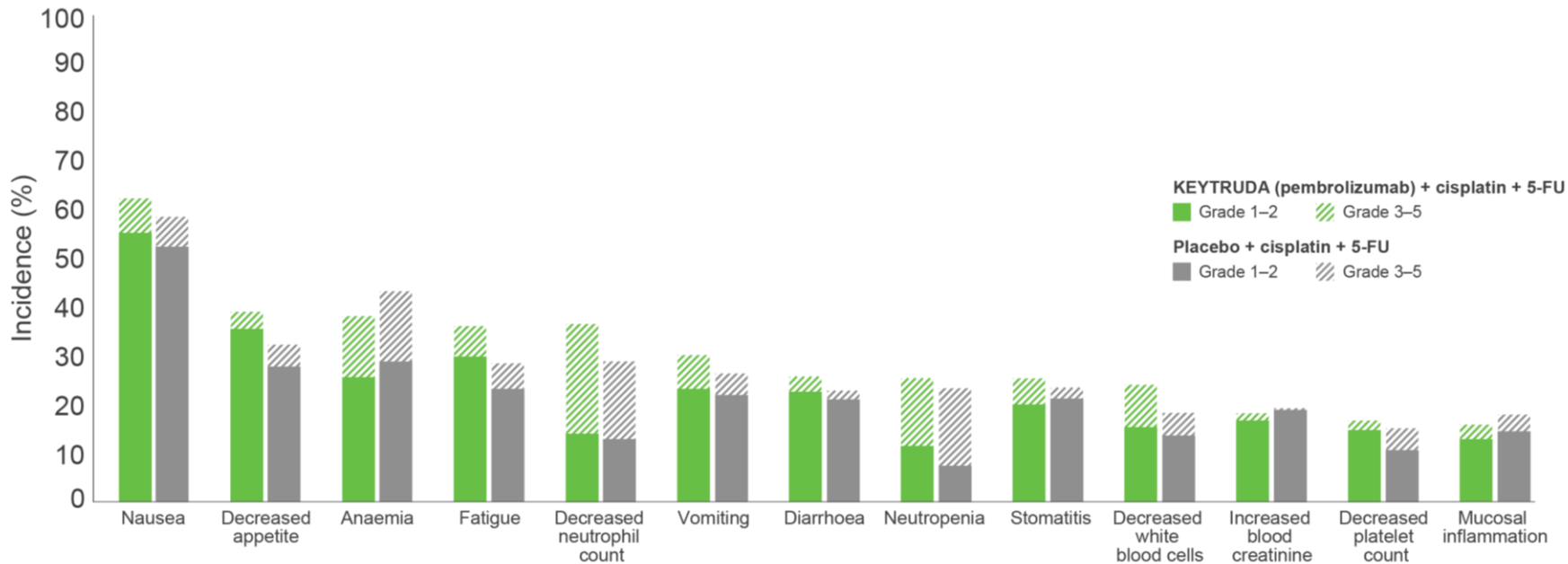
Analysis cut-off date: 2 July 2020. Median follow-up 22.6 months. The values indicated are the percentage of patients who were randomly assigned to a treatment group and received at least one dose of study treatment. Figure adapted from Kato K ESMO 2020. AE, adverse event.

1. Kato K et al. Presented at the European Society of Medical Oncology (ESMO) Virtual Congress 2020, 19–21 September 2020; 2. Sun JM et al. *Lancet* 2021;398:759–771.





## KEYNOTE-590: Selected AEs with >15% incidence in either arm (12-month follow-up analysis)



[Click here](#) to access the immune-mediated AE slide deck for adverse event management of pembrolizumab + chemotherapy combinations. Further information on the safety of pembrolizumab plus chemotherapy combinations can be found in the SmPC [here](#).

Analysis cut-off date: 9 July 2021. Median follow-up 34.8 months.

Figure adapted from Metges JP ASCO-GI 2022

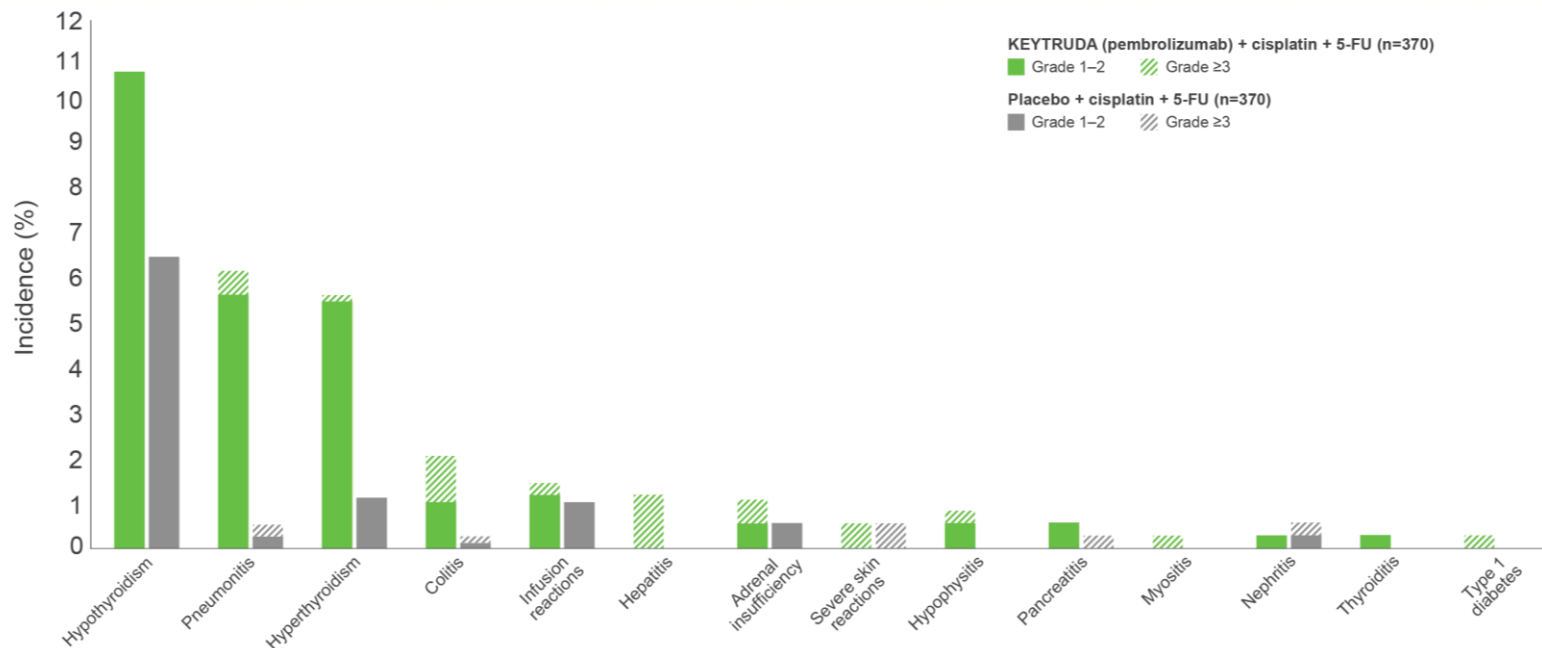
AE, adverse event.

Metges JP et al. Presented at the American Society of Clinical Oncology Gastrointestinal Cancers (ASCO-GI) Symposium 2022, 20–22 January 2022.





# KEYNOTE-590: Selected AEs of special interest<sup>a</sup> (first interim analysis)



[Click here](#) to access the immune-mediated AEs deck for adverse event management of pembrolizumab + chemotherapy combinations. Further information on the safety of pembrolizumab plus chemotherapy combinations can be found in the SmPC [here](#).

Analysis cut-off date: 2 July 2020. Median follow-up 22.6 months. The values indicated are the percentage of patients who were randomly assigned to a treatment group and received at least one dose of study treatment.

<sup>a</sup>Immune-mediated AEs and infusion reactions were based on a list of terms specified by the sponsor, regardless of attribution to any study treatment by investigators.

AE, adverse event.

Sun JM et al. *Lancet* 2021;398:759–771.





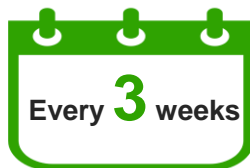
## Pembrolizumab dosing<sup>1,2</sup>



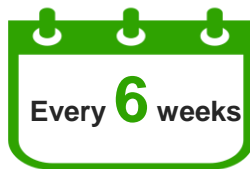
Administered as  
an IV infusion



Over **30** minutes



Adults: 200 mg



Adults: 400 mg

- Patients should be treated with pembrolizumab until disease progression or unacceptable toxicity
- Atypical responses (i.e. an initial transient increase in tumour size or small new lesions within the first few months followed by tumour shrinkage) have been observed
- It is recommended to continue treatment for clinically stable patients with initial evidence of disease progression until disease progression is confirmed
- No dose reductions of pembrolizumab are recommended. Pembrolizumab should be withheld or discontinued to manage AEs as described within the SmPC
- When administering pembrolizumab in combination with intravenous chemotherapy, pembrolizumab should be administered first

The regimen assessed in all clinical Phase 2 and 3 registration studies for KEYTRUDA was the 200 mg Q3W dosing. The study that led to the approval of the Q6W for monotherapy and combination patients assessed the 400 mg Q6W dosing schedule based on an exposure–response evaluation using modelling and simulation. It concluded that the 400 mg Q6W dosing regimen for KEYTRUDA monotherapy and combination is predicted to have a similar efficacy and safety profile as the approved 200 mg Q3W dosing regimen<sup>2</sup>





## KEYNOTE-590: Summary for patients with PD-L1 CPS $\geq 10^{1-3}$



- KEYTRUDA (pembrolizumab) plus cisplatin plus 5-FU is a licensed immunotherapy for locally advanced, unresectable or metastatic carcinoma of the oesophagus in adults whose tumours express PD-L1 with a CPS  $\geq 10$
- KEYTRUDA (pembrolizumab) plus cisplatin plus 5-FU versus placebo + cisplatin plus 5-FU was superior for OS in patients with PD-L1 CPS  $\geq 10$ 
  - First interim analysis: HR: 0.62, 95% CI: 0.49–0.78;  $p < 0.0001^{1,2}$
  - 12-month follow-up analysis: HR: 0.64, 95% CI: 0.51–0.80<sup>3</sup>
- KEYTRUDA (pembrolizumab) plus cisplatin plus 5-FU versus placebo plus cisplatin plus 5-FU was superior for PFS in patients with PD-L1 CPS  $\geq 10$ 
  - First interim analysis: HR: 0.51, 95% CI: 0.41–0.65;  $p < 0.0001^{1,2}$
  - 12-month follow-up analysis: HR: 0.51, 95% CI: 0.41–0.65<sup>3</sup>
- Grade  $\geq 3$  AEs occurred in 71.9% of patients in the KEYTRUDA (pembrolizumab) plus cisplatin plus 5-FU and 67.6% of patients in the placebo plus cisplatin plus 5-FU arm. [Click here for the full list of AEs](#)
  - Of those treated, patients in the KEYTRUDA plus cisplatin plus 5-FU group had a higher proportion of discontinuations of trial drugs compared with the placebo plus cisplatin plus 5-FU group:
    - First interim analysis: 19.5% vs 11.6%<sup>1</sup>
    - 12-month follow-up analysis: 21.1% vs 12.4%<sup>3</sup>
  - Immune-mediated and infusion-related reactions were experienced more frequently by patients who received KEYTRUDA plus cisplatin plus 5-FU compared with those receiving placebo plus cisplatin plus 5-FU, although no new safety signals were observed:
    - First interim analysis: 25.7% vs 11.6%<sup>1,2</sup>
    - 12-month follow-up analysis: 26.8% vs 13.8%<sup>3</sup>

Interim analysis cut-off date: 2 July 2020 (median follow-up 22.6 months); 12-month follow-up analysis cut-off date: 9 July 2021 (median follow-up 34.8 months).

CI, confidence interval; CPS, combined positive test score; AE, adverse event; HR, hazard ratio; OS, overall survival; PD-L1, programmed death ligand-1.

1. Kato K et al. Presented at the European Society of Medical Oncology (ESMO) Virtual Congress 2020, 19–21 September 2020; 2. Sun JM et al. *Lancet* 2021;398:759–771; 3. Metges JP et al. Presented at the American Society of Clinical Oncology Gastrointestinal Cancers (ASCO-GI) Symposium 2022, 20–22 January 2022.



# Appendix

**OS in ESCC CPS  $\geq 10$   
population  
(first interim analysis)**

**OS in ESCC CPS  $\geq 10$   
population (12-month  
follow-up analysis)**

**OS in key subgroups  
All patients  
(first interim analysis)**

**OS in key subgroups  
All patients (12-month  
follow-up analysis)**

**PFS in the key  
subgroup of ESCC  
(12-month follow-up  
analysis)**

**PFS in key subgroups  
All patients  
(first interim analysis)**

**CPS testing**

**KEYNOTE-590:  
Full list of AEs (1)**

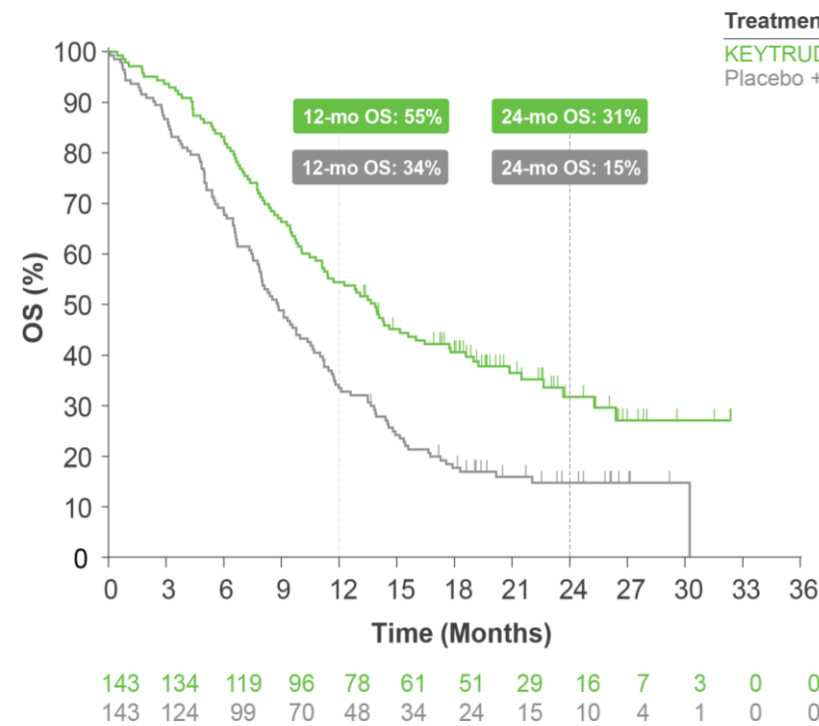
**KEYNOTE-590:  
Full list of AEs (2)**







# KEYNOTE-590: OS in the ESCC PD-L1 CPS $\geq 10$ population (first interim analysis)



Treatment arm	Events (%)	Median (95% CI), months	HR (95% CI)	p value
KEYTRUDA (pembrolizumab) + cisplatin + 5-FU	66	13.9 (11.1–17.7)	0.57 (0.43–0.75)	<0.0001
Placebo + cisplatin + 5-FU	85	8.8 (7.8–10.5)	—	—

KEYTRUDA (pembrolizumab) plus cisplatin plus 5-FU versus placebo plus cisplatin plus 5-FU was superior for OS in patients with ESCC and PD-L1 CPS  $\geq 10$

- 43% reduction in the risk of death with KEYTRUDA (pembrolizumab) plus cisplatin plus 5-FU (n=143) versus placebo plus cisplatin plus 5-FU (n=143) (HR=0.57; 95% CI: 0.43–0.75, p<0.0001)
- Median OS with KEYTRUDA (pembrolizumab) plus cisplatin plus 5-FU was 13.9 months (95% CI: 11.1–17.7) versus 8.8 months (95% CI: 7.8–10.5) with placebo plus cisplatin plus 5-FU

The OS forest plot for the key subgroups within the KEYNOTE-590 study is in the appendix. [Click here to view.](#)

Analysis cut-off date: 2 July 2020. Median follow-up 22.6 months.

Figure adapted from Kato K ESMO 2020.

5-FU, 5-fluorouracil; CI, confidence interval; CPS, combined positive score; ESCC, oesophageal squamous cell carcinoma; HR, hazard ratio; OS, overall survival; PD-L1, programmed death ligand-1.

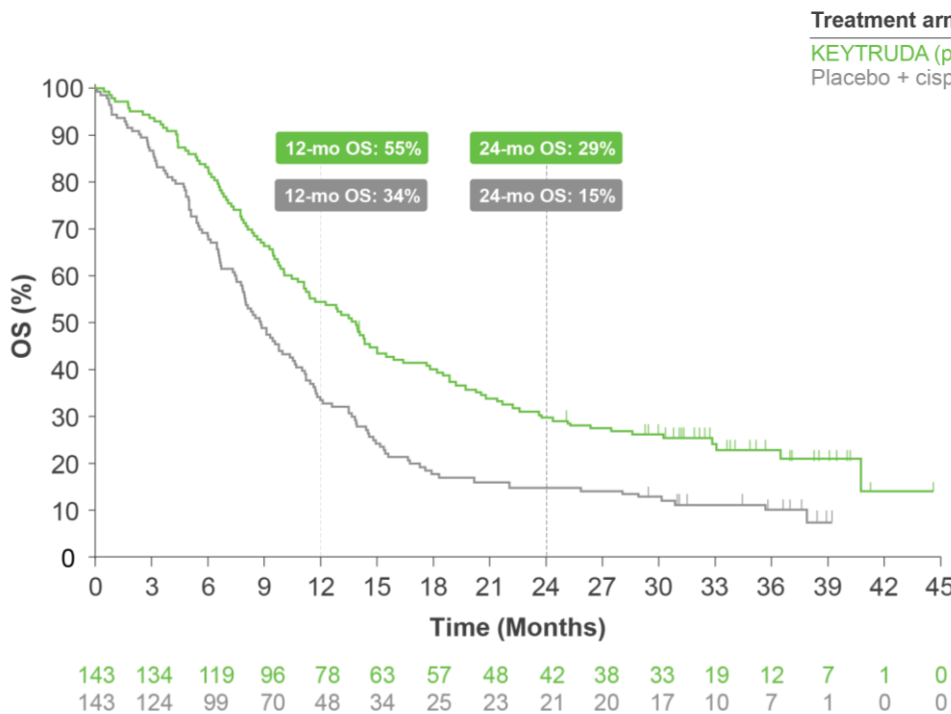
1. Kato K et al. Presented at the European Society of Medical Oncology (ESMO) Virtual Congress 2020, 19–21 September 2020; 2. Sun JM et al. *Lancet* 2021;398:759–771.

PI





# KEYNOTE-590: OS in the ESCC PD-L1 CPS $\geq 10$ population (12-month follow-up analysis)



Treatment arm	Events (%)	Median (95% CI), months	HR (95% CI)
KEYTRUDA (pembrolizumab) + cisplatin + 5-FU	78	13.9 (11.11–16.0)	0.59 (0.45–0.76)
Placebo + cisplatin + 5-FU	90	8.8 (7.8–10.5)	—

KEYTRUDA (pembrolizumab) plus cisplatin plus 5-FU versus placebo plus cisplatin plus 5-FU was superior for OS in patients with ESCC and PD-L1 CPS  $\geq 10$

- 41% reduction in the risk of death with KEYTRUDA (pembrolizumab) plus cisplatin plus 5-FU (n=143) versus placebo plus cisplatin plus 5-FU (n=143) (HR=0.59; 95% CI: 0.45–0.7)
- Median OS with KEYTRUDA (pembrolizumab) plus cisplatin plus 5-FU was 13.9 months (95% CI: 11.1–16.0) versus 8.8 months (95% CI: 7.8–10.5) with placebo plus cisplatin plus 5-FU

No statistical conclusions can be drawn from this analysis.  
The OS forest plot for the key subgroups within the KEYNOTE-590 study is in the appendix. [Click here to view.](#)

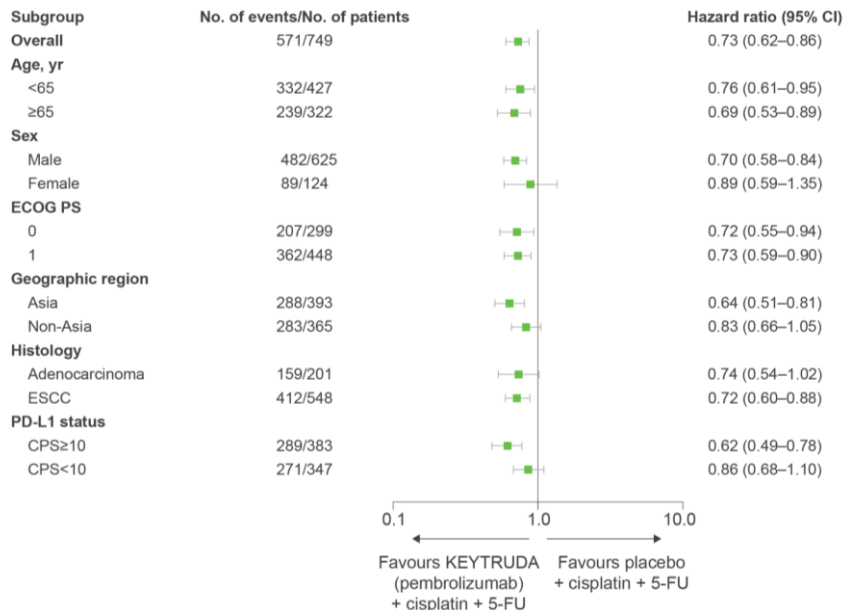
Analysis cut-off date: 9 July 2021. Median follow-up 34.8 months.  
Figure adapted from Metges JP ASCO-GI 2022.  
5-FU, 5-fluorouracil; CI, confidence interval; CPS, combined positive score; ESCC, oesophageal squamous cell carcinoma; HR, hazard ratio; OS, overall survival; PD-L1, programmed death ligand-1.  
Metges JP et al. Presented at the American Society of Clinical Oncology Gastrointestinal Cancers (ASCO-GI) Symposium 2022, 20–22 January 2022.



# KEYNOTE-590: OS in key subgroups – All patients (first interim analysis)



These data compromise the full ITT population. Please note that based on the evidence from this trial pembrolizumab is NOT licenced for patients with CPS<10. For information on the licence please [click here](#)



Only the ESCC and CPS ≥10 subgroups were powered to show statistically significant results. All other results are exploratory

Please note that the licensed indication for pembrolizumab is in locally advanced, unresectable or metastatic carcinoma of the oesophagus in adults whose tumours express **PD-L1** with a **CPS ≥10**

Analysis cut-off date: 2 July 2020. Median follow-up 22.6 months.

Figure adapted from Kato K ESMO 2020.

CI, confidence interval; CPS, combined positive test score; ECOG PS, Eastern Cooperative Oncology Group performance status; ESCC, oesophageal squamous cell carcinoma; HER2, human epidermal growth factor receptor 2; ITT, intention to treat; OS, overall survival; PD-L1, programmed death ligand-1.

Sun JM et al. *Lancet* 2021;398:759–771.

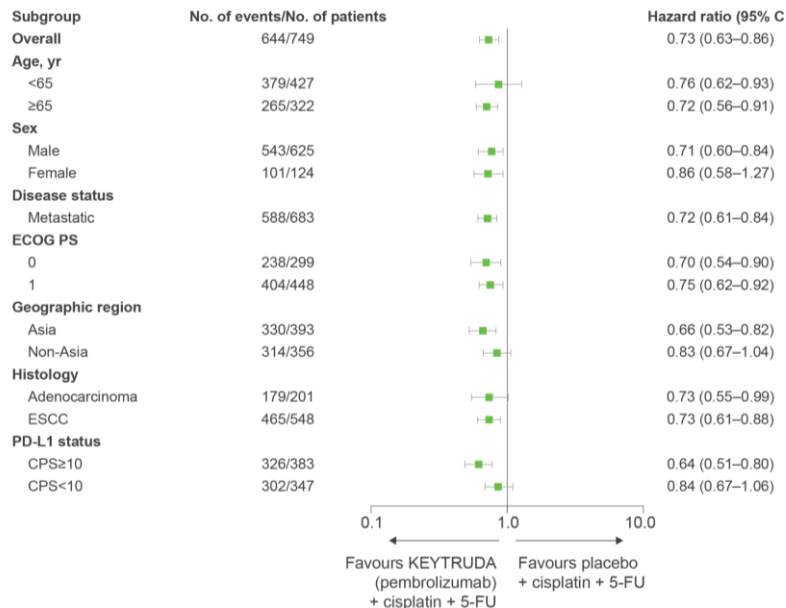




# KEYNOTE-590: OS in key subgroups – All patients (12-month follow-up analysis)



These data comprise the full ITT population. Please note that based on the evidence from this trial pembrolizumab is NOT licenced for patients with CPS<10. For information on the licence please [click here](#)



Only the ESCC and CPS ≥10 subgroups were powered to show statistically significant results. All other results are exploratory

Please note that the licensed indication for pembrolizumab is in locally advanced, unresectable or metastatic carcinoma of the oesophagus in adults whose tumours express **PD-L1** with a **CPS ≥10**

Analysis cut-off date: 9 July 2021. Median follow-up 34.8 months.

Figure adapted from Metges JP ASCO-GI 2022.

CI, confidence interval; CPS, combined positive test score; ECOG PS, Eastern Cooperative Oncology Group performance status; ESCC, oesophageal squamous cell carcinoma; HER2, human epidermal growth factor receptor 2; ITT, intention to treat; OS, overall survival; PD-L1, programmed death ligand-1.

Metges JP et al. Presented at the American Society of Clinical Oncology Gastrointestinal Cancers (ASCO-GI) Symposium 2022, 20–22 January 2022.

PI

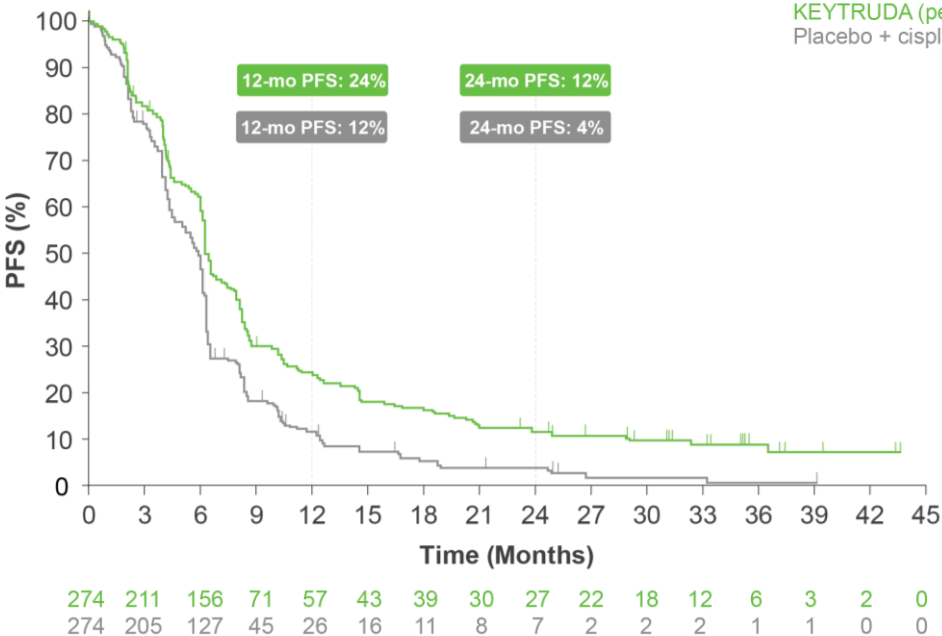




# KEYNOTE-590 updated analysis: PFS in the prespecified subgroup of ESCC (12-month follow-up analysis)



Treatment arm	Events (%)	Median (95% CI), months	HR (95% CI)
KEYTRUDA (pembrolizumab) + cisplatin + 5-FU	82	6.3 (6.2–7.1)	0.65 (0.54–0.78)
Placebo + cisplatin + 5-FU	90	5.8 (5.0–6.1)	—



KEYTRUDA (pembrolizumab) plus cisplatin plus 5-FU versus placebo plus cisplatin plus 5-FU was superior for PFS in patients with ESCC

- 35% reduction in the risk of disease progression or death with KEYTRUDA (pembrolizumab) plus cisplatin plus 5-FU (n=274) versus placebo plus cisplatin plus 5-FU (n=274) (HR=0.65; 95% CI: 0.54–0.78)
- Median PFS with KEYTRUDA (pembrolizumab) plus cisplatin plus 5-FU was 6.3 months (95% CI: 6.2–7.1) versus 5.8 months (95% CI: 5.0–6.1) with placebo plus cisplatin plus 5-FU

No statistical conclusions can be drawn from this analysis.  
The PFS forest plot for the key subgroups within the KEYNOTE-590 study is in the appendix. [Click here to view.](#)

Analysis cut-off date: 9 July 2021. Median follow-up 34.8 months.

Figures adapted from Metges JP ASCO-GI 2022.

5-FU, 5-fluorouracil; CI, confidence interval; CPS, combined positive score; ESCC, oesophageal squamous-cell carcinoma; HR, hazard ratio; PFS, progression-free survival.

Metges JP et al. Presented at the American Society of Clinical Oncology Gastrointestinal Cancers (ASCO-GI) Symposium 2022, 20–22 January 2022.

PI

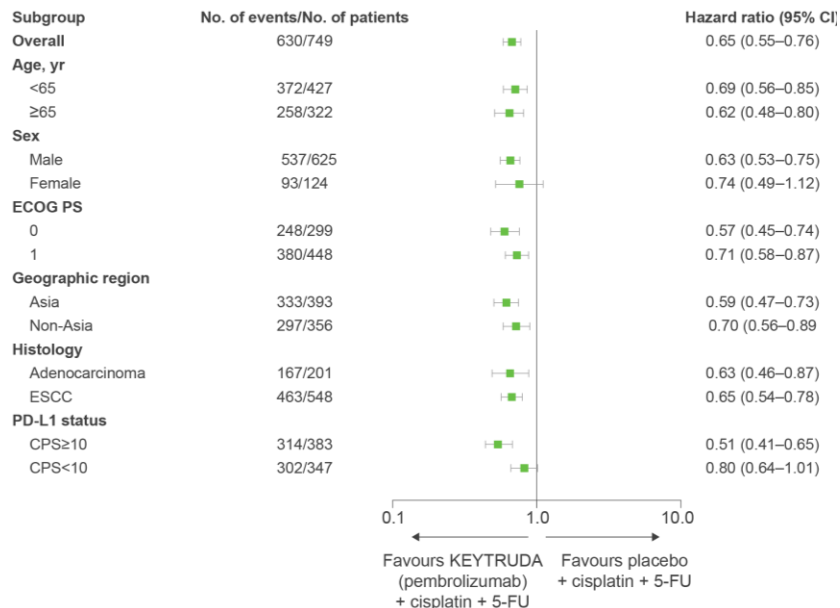




# KEYNOTE-590: PFS in key subgroups – All patients (first interim analysis)



These data compromise the full ITT population. Please note that based on the evidence from this trial pembrolizumab is NOT licenced for patients with CPS<10. For information on the licence please [click here](#)



Only the ESCC and CPS ≥10 subgroups were powered to show statistically significant results. All other results are exploratory

Please note that the licensed indication for pembrolizumab is in locally advanced, unresectable or metastatic carcinoma of the oesophagus in adults whose tumours express **PD-L1** with a **CPS ≥10**

Analysis cut-off date: 2 July 2020. Median follow-up 22.6 months.

Figure adapted from Kato K ESMO 2020.

CI, confidence interval; CPS, combined positive test score; ECOG PS, Eastern Cooperative Oncology Group performance status; ESCC, oesophageal squamous cell carcinoma; HER2, human epidermal growth factor receptor 2; ITT, intention to treat; PD-L1, programmed death ligand-1; PFS, progression-free survival.

Sun JM et al. *Lancet* 2021;398:759–771.

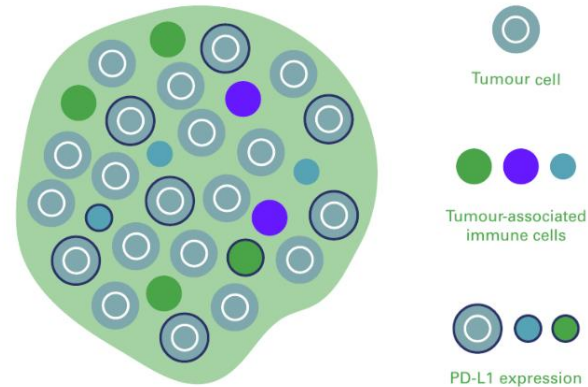




### CPS – a snapshot of the tumour microenvironment

- The CPS scoring algorithm offers a snapshot of PD-L1 expression by incorporating both tumour and immune cells
- This helps identify patients for the most appropriate treatment
- The PD-L1 22C3 IHC pharmDx assay, scored using the CPS algorithm, is used to define [eligibility](#) for treatment with pembrolizumab + chemotherapy

$$\text{CPS} = \frac{\text{\#PD-L1 staining cells (tumour cells, lymphocytes, macrophages)}}{\text{Total \#viable tumour cells}} \times 100$$



For further information on CPS testing, [click here](#). By clicking on this link you will be taken to an MSD promotional website.





# KEYNOTE-590: Full AE list (first interim analysis) [1]



AEs, n (%) <sup>a</sup>	KEYTRUDA (pembrolizumab) + cisplatin + 5-FU (n=370)		Placebo + cisplatin + 5-FU (n=370)	
	Any	Grade ≥3	Any	Grade ≥3
<b>Any</b>	370 (100)	318 (86)	368 (99)	308 (83)
<b>Treatment-related adverse events<sup>b</sup></b>				
Nausea	233 (63)	26 (7)	220 (59)	24 (6)
Decreased appetite	145 (39)	13 (4)	119 (32)	16 (4)
Anaemia	143 (39)	46 (12)	162 (44)	54 (15)
Fatigue	135 (36)	23 (6)	107 (29)	20 (5)
Decreased neutrophil count	135 (36)	84 (23)	109 (29)	62 (17)
Vomiting	110 (30)	23 (6)	99 (27)	18 (5)
Diarrhoea	97 (26)	12 (3)	85 (23)	7 (2)
Neutropenia	96 (26)	53 (14)	88 (24)	60 (16)
Stomatitis	96 (26)	21 (6)	93 (25)	14 (4)
Decreased white blood cells	89 (24)	32 (9)	69 (19)	18 (5)
Increased blood creatine	67 (18)	5 (1)	70 (19)	1 (<1)
Decreased platelet count	61 (16)	7 (2)	56 (15)	17 (5)

AEs, n (%) <sup>a</sup>	KEYTRUDA (pembrolizumab) + cisplatin + 5-FU (n=370)		Placebo + cisplatin + 5-FU (n=370)	
	Any	Grade ≥3	Any	Grade ≥3
Mucosal inflammation	59 (16)	12 (3)	65 (18)	13 (4)
Leukopenia	24 (6)	6 (2)	28 (8)	11 (3)
Thrombocytopenia	25 (7)	5 (1)	33 (9)	10 (3)
Tinnitus	33 (9)	2 (1)	25 (7)	0
Hyperthyroidism	19 (5)	0	2 (1)	0
Hypothyroidism	38 (10)	0	22 (6)	0
Constipation	50 (14)	0	63 (17)	0
Asthenia	45 (12)	12 (3)	35 (9)	4 (1)
Malaise	43 (12)	2 (1)	39 (11)	4 (1)
Increased aspartate aminotransferase	18 (5)	3 (1)	19 (5)	2 (1)
Decreased lymphocyte count	21 (6)	7 (2)	20 (5)	5 (1)
Decreased weight	43 (12)	4 (1)	47 (13)	8 (2)
Dehydration	20 (5)	8 (2)	16 (4)	8 (2)

The analysis cut-off date was 2 July 2020; median follow-up was 22.6 months.

Table adapted from Sun JM et al. 2021.

<sup>a</sup>Unless otherwise stated; <sup>b</sup>Treatment-related adverse events with incidence of 5% or higher in any group are shown; treatment-related grade 5 events included febrile neutropenia, diarrhoea, multiple organ dysfunction, hepatic failure, pneumonia, acute kidney injury, interstitial lung disease, pneumonitis, and pulmonary embolism, which each occurred in one patient in the pembrolizumab plus chemotherapy group, and febrile neutropenia, death, multiple organ dysfunction syndrome, sepsis, and interstitial lung disease, which each occurred in one patient in the placebo plus chemotherapy group. AE, adverse event.

Sun JM et al. *Lancet* 2021;398:759–771.







# KEYNOTE-590: Full AE list (first interim analysis) [2]



AEs, n (%) <sup>a</sup>	KEYTRUDA (pembrolizumab) + cisplatin + 5-FU (n=370)		Placebo + cisplatin + 5-FU (n=370)	
	Any	Grade ≥3	Any	Grade ≥3
<b>Treatment-related adverse events continued<sup>b</sup></b>				
Hypokalaemia	34 (9)	17 (5)	41 (11)	19 (5)
Hypomagnesaemia	21 (6)	2 (1)	14 (4)	3 (1)
Hyponatraemia	32 (9)	20 (5)	40 (11)	20 (5)
Dysgeusia	34 (9)	0	32 (9)	0
Peripheral neuropathy	32 (9)	1 (<1)	32 (9)	0
Peripheral sensory neuropathy	34 (9)	1 (<1)	29 (8)	1 (<1)
Hiccups	40 (11)	0	33 (9)	0
Pneumonitis	20 (5)	7 (2)	0	0
Alopecia	51 (14)	0	39 (11)	0
Pruritus	23 (6)	1 (<1)	8 (2)	0
Rash	29 (8)	0	18 (5)	1 (<1)

AEs, n (%) <sup>a</sup>	KEYTRUDA (pembrolizumab) + cisplatin + 5-FU (n=370)		Placebo + cisplatin + 5-FU (n=370)	
	Any	Grade ≥3	Any	Grade ≥3
<b>Adverse events of special interest<sup>c</sup></b>				
Hypothyroidism	40 (11)	0	24 (6)	0
Pneumonitis	23 (6)	2 (1)	2 (1)	1 (<1)
Hyperthyroidism	21 (6)	1 (<1)	3 (1)	0
Colitis	8 (2)	4 (1)	6 (2)	3 (1)
Infusion reactions	6 (2)	1 (<1)	4 (1)	0
Hepatitis	5 (1)	5 (1)	0	0
Adrenal insufficiency	4 (1)	2 (1)	2 (1)	0
Severe skin reactions	4 (1)	4 (1)	2 (1)	2 (1)
Hypophysitis	3 (1)	1 (<1)	0	0
Pancreatitis	2 (1)	0	1 (<1)	1 (<1)
Myositis	1 (<1)	1 (<1)	0	0
Nephritis	1 (<1)	0	2 (1)	1 (<1)
Thyroiditis	1 (<1)	0	0	0
Type 1 diabetes	1 (<1)	1 (<1)	0	0

The analysis cut-off date was 2 July 2020; median follow-up was 22.6 months.

Table adapted from Sun JM et al. 2021.

<sup>a</sup>Unless otherwise stated; <sup>b</sup>Treatment-related adverse events with incidence of 5% or higher in any group are shown; treatment-related grade 5 events included febrile neutropenia, diarrhoea, multiple organ dysfunction, hepatic failure, pneumonia, acute kidney injury, interstitial lung disease, pneumonitis, and pulmonary embolism, which each occurred in one patient in the pembrolizumab plus chemotherapy group, and febrile neutropenia, death, multiple organ dysfunction syndrome, sepsis, and interstitial lung disease, which each occurred in one patient in the placebo plus chemotherapy group; <sup>c</sup>Immune-mediated adverse events and infusion reactions were based on a list of terms specified by the sponsor, regardless of attribution to any study treatment by investigator. AE, adverse event.

Sun JM et al. *Lancet* 2021;398:759–771.



**Promotional Material Certificate**

**Version:** 1 . 0

**Document Number:** GB-ESO-00053

**Document Name:** Oeso KN-590 Clinical Summary MSDC version - Aug '25

**Country:** United Kingdom

**Product:** GB KEYTRUDA Esophageal

**Type:** Material

**Sub Type:** Healthcare Professional Resource

**Promotional Material Statement - Signatory**

I (the undersigned) certify that I have examined the final form of this material and that in my belief it is in accordance with the requirements of the relevant advertising regulations and the ABPI Code of Practice, is not inconsistent with the marketing authorisation and the summary of product characteristics and is a fair and truthful presentation of the facts about the medicine.

**Digital Assets**

I have examined the final functional form of this digital asset on MSD devices (laptop and mobile phone) including the active links provided within and have verified that it is compliant with ABPI Code Standards.

Role	Signature
Daniel McHugh - Medical Approval (daniel.mchugh1@msd.com)	Capacity: Medical Date: 13-Aug-2025 17:58:54 GMT+0000
Daniel McHugh - Medical Signatory Certification (daniel.mchugh1@msd.com)	Capacity: Medical Signatory Date: 14-Aug-2025 08:43:08 GMT+0000